



exclusive distributor

11 General Warren Blvd, Malvern PA 19355
 Phone: 610.695.9700
 Fax: 610.695.9724
 WWW.DELTADUCON.COM

CICSA, founded in 1941, is one of the most relevant manufacturers of chains and components for bulk materials handling equipments, worldwide.

Headquartered in Italy (Milan area) with its main manufacturing unit, and in Spain (Barcelona area) with another manufacturing unit, CICSA Group comprises an Indian company and a Chinese company acting as country basis and sales/after-sales units, along with representatives all around the world. CICSA Group products are exported to over 60 countries in the world, with a production range that includes round steel link chains (with diameters from 13 mm to 42 mm), mechanical chains, and forged chains, with all the various related components such as wheels (toothed and plain), shackles, couplings, and attachments.



QUALITY THAT MATTERS



- We are proud we were the first chain manufacturer in the world to get the ISO 9001 Quality Certification in 1990.
- CICSA's large experience and quality-focused attitude is the powerful secret sauce allowing us to provide our customers with well performing and long lasting solutions, in particular for the most severe applications where speed, temperature, chemical attack, wear and tear, usually affect products a lot.
- All of our products are manufactured in our EU facilities, with state-of-the-art technologies and processes and very restricted tolerances, and are extensively tested to grant the best results.

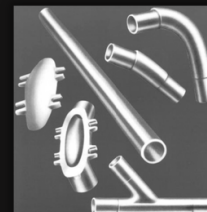
INDUSTRIES



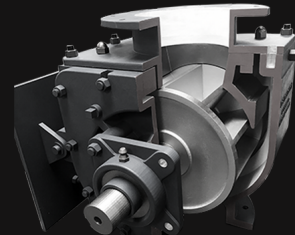


About Delta Ducon:

Delta Ducon provides equipment and full systems for material handling applications serving a broad range of industries. The Delta Ducon product line is leading the industry for dry bulk material handling especially when material is considered as abrasive, severe or difficult to handle.



PERMA/flo elbows



Extreme Rotary Valve

CICSA products last longer thanks to:



Butt flash welding, that is «global leading technology» for welding of high quality alloy steels



Use of specially tailored alloy steels



Advanced heat treatments in controlled atmosphere



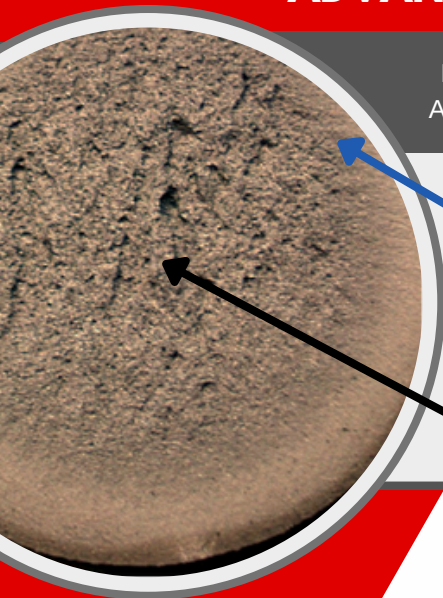
Continuous testing activity, throughout the entire production cycle



Great attention for details: surface state, shape and geometry, precision of machining, uniformity

ADVANCED TECHNOLOGY FOR EQUIPMENTS THAT LAST LONGER

RESISTANCE TO WEAR AND TEAR COMES FROM THE USE OF PROPER ALLOY STEELS AND THROUGH SPECIAL HEAT TREATMENT PROCESSES



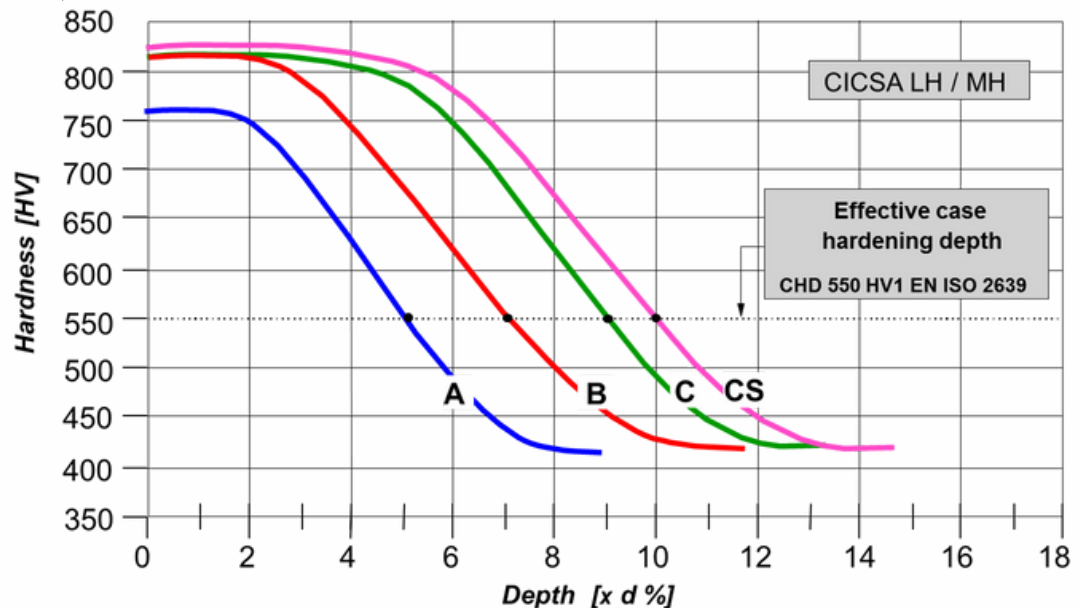
Surface layer with high hardness, martensitic structure with very fine grane



Nucleus with fine grain, with bainitic/martensitic structure

- high surface hardness (820 HV for models LH B/C, 830 HV for models LH-CS)
- extensive case hardening depth (Effective "CHD" up to 12% and Total "HTA" up to 15%)

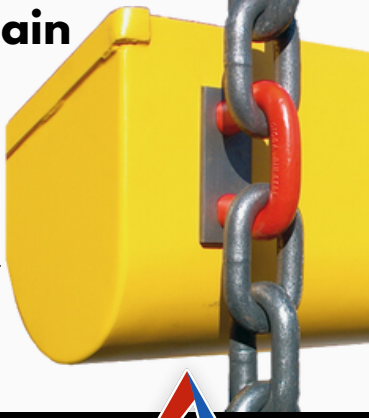
Nominal hardness curves



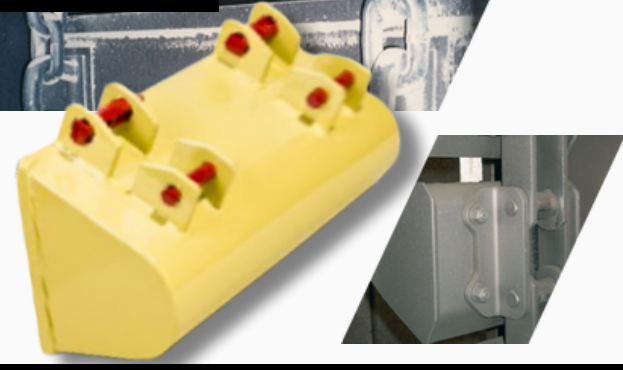
11 General Warren Blvd
Malvern, PA 19355
Phone: 610.695.9700
Fax: 610.695.9724

Round steel chain

CICSA's round steel chains are well known worldwide for their quality, reliability, and high performances. In particular for applications with high speed, severe wear and tear, high temperature and complicated conditions.



Buckets



11 General Warren Blvd
Malvern, PA 19355



Phone: 610.695.9700
Fax: 610.695.9724

Shackles, Connectors, Wheels

- Shackles "DIN"
- Special design shackles
- Wheels
- Connectors



Components for Scrapers



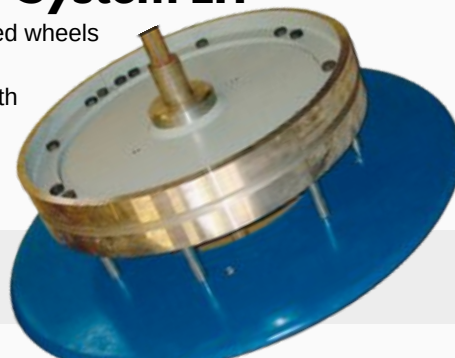
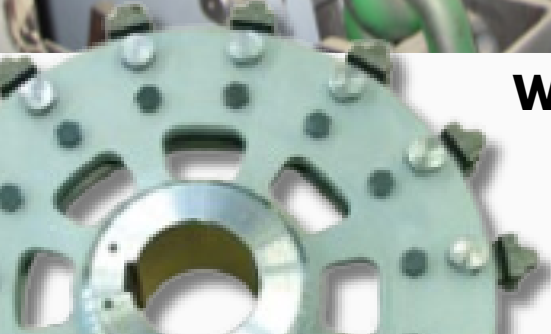
System LH



Pins & Stirrups for System LH

Wheels for System LH

- Driving toothed wheels
- Plain heels
- Individual teeth



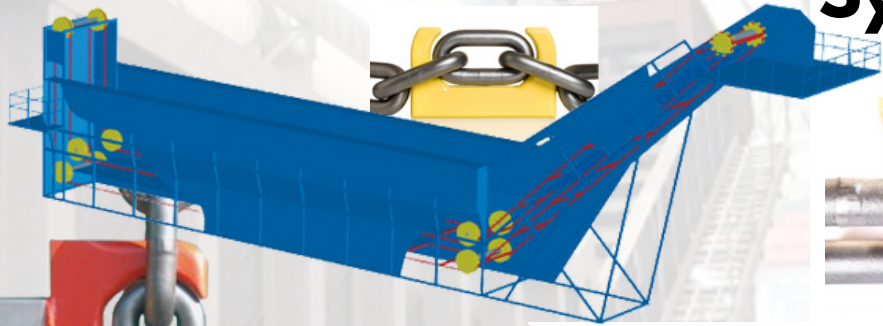
WWW.DELTADUCAN.COM

 **CICSA**

Chains for SSCs

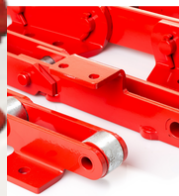
(SUBMERGED SCRAPER CONVEYORS)

Connectors for System LH



Mechanical Forged Chains

- Conveyor chain with pin and bush
- Chain for bucket elevators
- Central chain
- Chain for Apron Feeders
- Scraper chain



exclusive distributor



11 General Warren Blvd, Malvern PA 19355
Phone: 610.695.9700
Fax: 610.695.9724
WWW.DELTADUCON.COM

